

SAMPLE PAPER FOR PERIODIC TEST 1
CLASS- X ENGLISH LANGUAGE & LITERATURE
SET II 2023-24

MARKS: 40

TIME : 90 MIN

General Instructions:

The question paper contains three sections

Reading

Writing & Grammar

Literature

SECTION -A (READING)

A-1: Read the following passage carefully and answer the questions that follow:- (7)

1. Over the last few days, Delhi residents have been protesting against the government's approval for felling over 14,000 trees in South Delhi. Faced with severe criticism, the National Buildings Construction Corporation,

tasked with redeveloping half a dozen South Delhi colonies, on Monday assured the Delhi High Court that no trees would be cut for the project till July 4, which is transitory relief. Many of the trees proposed to be felled are mature, local, fruit-bearing ones that provide clean air, shade and water recharge to humans and are homes

to many birds. These areas of Delhi have served as the 'lungs' of the city. However, the project reports overlook these qualities.

2. Large constructions have been difficult to manage in India. The sector has systematically lobbied to be excluded from the environmental norms of the country and has been successful in carving out special privileges for itself

in the environment clearance process. From 2006, most construction projects have been approved based on an application form instead of detailed assessment reports. In 2014, schools, colleges and hostels for educational

institutions were exempted from taking environment clearances as long as they followed specific sustainability parameters. In 2016, projects with areas of less than 20,000 sq m were permitted to proceed as long as they

submitted a self-declaration ensuring adherence to environmental norms. As a result of these privileges,

construction projects contribute significantly to urban air and noise pollution and high water consumption in cities. Compensatory afforestation taken up in lieu of trees felled by projects is a failure due to poor survival rates of saplings and no monitoring.

3. Yet all regulatory bodies treat large constructions with kid gloves. The Minister for Urban Development has

stated that this public campaign is 'misinformed'. But that is far from the truth. In a literate, urban society that has high access to the Internet, the lack of official information on urban development and its impacts can only be understood as an indirect form of public silencing. There are no public hearings held for urban construction

projects and governments assume that citizens have nothing to say about them. Since Delhi is ruled by so many agencies, you can run from pillar to post and still not have a clue about who is in charge of what. The residents are now appealing to the government to embrace inclusive ways of redesigning the city. The governments could join hands by committing to review these projects.

4. One of the severe side effects of constantly lessening number of trees in the city is the increase in air pollution, which is only adding to the already existing gigantic issue of smog that ails the city in winters.

Questions

Based on your understanding of the passage, answer the questions by choosing the correct option.

(i) According to the author, what, from the following, is the greatest lesson to be learnt from the above passage?

- (a) Steps must be taken to ensure that no government can do as they wish and harm anyone in the process.
- (b) Steps must be taken to ensure that any construction that happens follows the environmental norms.
- (c) Steps must be taken to ensure that trees are grown in large numbers around the city.
- (d) Steps must be taken by the general public to hinder any such construction that may have adverse affect on the environment.

(ii) Select the option that suitably completes the dialogue with reference to the above passage.

Kajal: Many trees have been cut down to make space for the new apartments near our society. It is very unfair. The birds have already left. Don't you agree?

Vaibhav:

- (a) No, I don't. We need more homes to live
- (b) Yes, I do. But it's not too bad. They are going to use the wood in making the houses
- (c) No, I don't. It is not of our concern

(d) Yes, I do. It is very bad for nature and for all living beings

(iii) Choose the option that best conveys the message in

– “These areas of Delhi have served as the ‘lungs’ of the city.”

(a) Due to presence of many trees, the Ministry for Urban Development provides oxygen for most of the city.

(b) Due to presence of many trees, the urban society provides oxygen for most of the city.

(c) Due to presence of many trees, the South Delhi area provides oxygen for most of the city.

(d) Due to presence of many trees, the Delhi uses most of the oxygen from the city.

(iv) What qualities do the large construction companies display when extract special privileges for them in environment clearance process? Choose one option from the following.

(a) Shrewd and self-serving

(b) Philanthropist and ameliorating

(c) sadist behaviour towards the destitute

(d) malignant and hostile

(v) A Portmanteau [words like brunch (breakfast + lunch)] is a blend of words in which parts of multiple words are combined to form a new word. From the options given below, select a Portmanteau word that appears in the above passage.

(a) Sapling (b) Felled

(c) Smog (d) Recharge

(vi) Select the qualities that are being discussed in the line – “However, the project reports overlook these qualities”.

(1) The benefits that the presence of trees provide to all living beings.

(2) The enthusiasm of people to save their environment.

(3) The importance of trees in the environment.

(4) The laidback approach of the Judiciary.

(5) The destruction and noise pollution accompanying the projects.

(a) 1 and 3 (b) 2, 3 and 5

(c) 1, 4 and 5 (d) 2 and 4

(vii) Choose the option that contains the correct

meaning of the given idiom, as used in the third paragraph.

Treat/handle with kid gloves

- (a) To upset someone by treating them like a child.
- (b) To equate someone with a child.
- (c) To deal gently and tactfully with someone.
- (d) To say that someone is very childish.

A-2: Read the following passage carefully and answer the questions that follow :-**(7)**

1. Sprouts relatively contain the largest amount of nutrients per unit of any food known to man. Sprouts produce a fountain of power for chemical changes. Enzymes are produced, starch gets converted into glucose, protein is

transformed into amino acids and vitamin value increases. In fact, a new explosion of life force takes place. According to Dr Bailey of the University of Minnesota, USA, the vitamin C value of wheat increases 600% in the early sprouting period. Dr CR Shaw of the University of Texas Cancer Centre found that cancer was inhibited

upto 90% when healthy bacteria were exposed to a cancer causing substance in the presence of a juice made from wheat sprouts.

2. Enzymes, which initiate and control almost every chemical reaction in our bodies, are greatly activated in the

sprouting process. Enzymes spark the entire digestive system to synthesise the nutrients in our food into blood. They are the key to longevity.

3. Sprouts are enjoyed more when they are fresh. Mix sprouts with other foods and dressing according to your

taste and enjoy eating them. But you must eat them every day you will soon realise that making sprouts a part of your diet has a dramatic effect on your health. With this live food, all the cells of your body will become active

and agile.

4. The nourishment which develops as the sprouts grow is very stable and can be frozen or dried for future.

Sprouted potato or tomato seeds are likely to be poisonous. Alfalfa and moong bean sprouts are excellent soft food. They are almost predigested and can be easily assimilated even by the children and the elderly. They

contain every known vitamin in perfect balance necessary for the human body.

Health benefits of sprouts

Aid in digestion

Boost immune system

Aid in weight management

Protect body against cancer Improve blood circulation in body

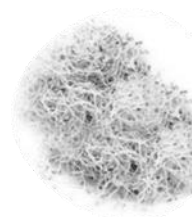
Help to reduce risk of heart ailments Help in growth and development of body

Reduce risk of neural tube defects in infants

Help to prevent cataracts and muscular degeneration

Inhibit growth of cold sores and reduce effect of allergic reactions and asthma

Caution : Wash well before use to prevent any type of microbial infection



Questions

Based on your understanding of the passage, answer the questions by choosing the correct option.

(i) Which element initiates chemical reaction in our body?

- (a) Enzymes (b) Sprouts (c) Bacteria (d) Vitamins

(ii) According to Dr CR Shaw, cancer was inhibited upto with the help of sprouts.

- (a) 80% (b) 90% (c) 20% (d) 95%

(iii) As per the passage eating sprouts is good for

- (a) children (b) adults (c) the elderly (d) All of these

(iv) The qualities of sprouts as mentioned in the last para of the passage are

- I. excellent soft food II. predigested
III. can be easily assimilated IV. contain poisonous element

- (a) I and II
(b) I, II and III
(c) III and IV
(d) I, III and IV

- (v) The word from the passage means absorb of 'digest'.
- (a) assimilated (b) predigest (c) dried (d) soft
- (vi) Choose the option that lists the statement that is NOT TRUE.
- (a) Sprouts contain hard proteins that are not easily digested.
- (b) The perfect balance of the vitamins in the body can be obtained from sprouts.
- (c) In the sprouting process, enzymes are greatly activated.
- (d) All of the above
- (vii) Which of the following is not a step in the sprouting process?
- (a) Production of enzymes.
- (b) Conversion of starch into glucose.
- (c) Release of essential vitamins.
- (e) Transformation of protein into amino acids
- (f) Malignant and hostile

SECTION -B (WRITING & GRAMMAR)

B-1:. Write a letter to Lightways Sports, Amrapalli, Thane, placing an order for sports articles (minimum 4 items) to be supplied to your school, ABC Matriculation School, Civil Lines, Pune. Sign as Ravi/Raveena, Sports Secretary. **(5)**

B-2:- Attempt any five questions from the following seven question. **(5)**

(Fill in the blanks i-v)

- I. Once upon a time there (live) a man called Damocles.
- II. He gave me lecture in which he pointed out an error in the book.
- III. Everyone save the natural resources of the Earth.
- IV. It is time we (act) with determination.
- V. There are tourists who visit the Red Fort in Delhi.
- VI. Change the given sentence into Indirect speech. Sohan said to Shipa, "Bring me a glass of water please."
- VII. Change the given sentence into Direct speech. The officer commanded the troop to move forward.

Section C Literature

C-1: Read the following extract and answer the questions that follow.(4)

When he finished, he went to the window to buy a stamp which he licked and then affixed to the envelope with a blow of his fist. The moment the letter fell into the mailbox. The Postmaster went to open it. It said : "God ! of the money that I asked for only 70 pesos reached me. Send me the rest. since I need it very much .But don't send it to me through the mail because the post office employees are" a bunch of Crooks" Lencho.

- (i) Name the lesson and writer of the extract.
- (ii) Who was Lencho? What were his main problems?
- (iii) Why did Lencho write a letter to God?
- (iv) Why did Lencho not want the money to be sent through mail?

C-2: Read the following extract and answer the questions that follow. (4)

Some say the world will end in fire

Some say in ice

From what I have tested of desire

I hold with those who favour fire.

- (i) Name the poet and the poem?
- (ii) Write down the two different views about the end of the world?
- (iii) What is the rhyme scheme of above stanza?
- (iv) What message does the poet want to convey through this poem

C-3:-Answer any FOUR of the following Questions:-- (2x4=8)

1 what train obligations does Mandela mention?

2 what does Mandela mean when he says he is simply the sum of all those African Patriots who had gone before him?

3 why does the Postmaster send money to Lencho ? Why does he sign the letter God ?

4 What is a dust of snow? What does the poet say has changed his mood ? How has the poet's mood changed?

5 Do you think Tricky was happy to go home ?What do you think will happen now?

6 why does Anil not hand the thief over the police? Do you think the most people would have done so? In what ways is Anil different from such employers?

.....