

KENDRIYA VIDYALAYA SANGATHAN
ZIET, CHANDIGARH
REVISION PAPER, SET- I
UNIT- VIII

(Chapters: Human Health and Diseases, Microbes in Human Welfare)

Subject: Biology

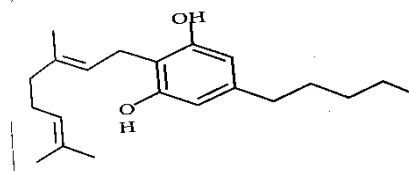
Class: XII

TIME: 1:00 Hr.

Max. Marks: 20

Note: Question no. one to four is of 01 mark each, question no five and six is of 02 marks each, question number three is of 03 marks, question no five is a case study based and is of 04 marks and question number six is of 5 marks.

SN	Question	Marks																
1	The disease has symptoms like intestinal perforation, loss of appetite, and stomach pain. Which diagnosis test the doctor will advise the patient- a- Polymerase chain reaction b- Enzyme-linked immunosorbent assay c- Widal test d- Immunoglobulin test	1																
2	The light and heavy chain of globulin protein is held together with- a- Hydrogen bond b- Ionic bond c- Phosphodiester bond d- Disulphide bond	1																
3	Match the correct pairs <table><tr><td>i</td><td>Trichoderma</td><td>p</td><td>Cotton</td></tr><tr><td>ii</td><td>Aphids</td><td>q</td><td>Fungus</td></tr><tr><td>iii</td><td>Bacillus</td><td>r</td><td>Virus</td></tr><tr><td>iv</td><td>NPV</td><td>s</td><td>Ladybird</td></tr></table> a- i – q, ii- s, iii- p, iv- r b- i – q, ii- s, iii- p, iv- r c- i – r, ii- s, iii- p, iv- q d- i – q, ii- s, iii- r, iv- p	i	Trichoderma	p	Cotton	ii	Aphids	q	Fungus	iii	Bacillus	r	Virus	iv	NPV	s	Ladybird	1
i	Trichoderma	p	Cotton															
ii	Aphids	q	Fungus															
iii	Bacillus	r	Virus															
iv	NPV	s	Ladybird															
4	Find the correct statement- i- fungi are associated with the formation of mycorrhiza with the genus Glomus ii- Mycorrhiza is an association of fungal hyphae with roots iii- Mycorrhizal association shows resistance to root-borne pathogens iv- It also increases stress tolerance arise due to some physical factors a- Only i and ii are correct b- All are correct c- Only ii and iv are correct d- Only I, ii, iii, and iv are correct	1																
5	i- Name the infective stage of the malarial parasite. ii- In which organ/s does the asexual reproduction of plasmodium vivax take place? iii- Where do the fertilization and development of malaria parasite take place iv- What is the reason for the chilling effect of malaria disease.	2																
6	The pathogen for acquired immunodeficiency deficiency syndrome is a retrovirus. i- Where does the replication of the virus is takes place inside the host cell? ii- Name the enzyme responsible for the formation of viral DNA. iii- Which test is suitable to diagnose this disease? iv- Why this is called as a syndrome?	2																
7	i- Write the name of the drug by viewing the given diagram. ii- Mention the source of the drug. iii- From which part of the plant the drug is obtained?	3																



8	<p>Biogas is one of the viable alternatives to the burning energy question. In 2014-15, about 20,700 lakh cubic meters of Biogas is produced in the country which is equivalent to 5% of the total LPG consumption in the country. The Government is also extending substantial subsidy for the setting up of new Biogas plants. It provides clean gaseous fuel for cooking and lighting. Chemical fertilizers can be done away with since the digested slurry obtained from the biogas plants can be used as enriched bio-manure. It is good for the climate and for sanitation problems since toilets can be linked directly with biogas plants. The given graph represents the production of biogas in a few states of our country.</p> <div><p>Production of Biogas in Lakh Cubic Meter (2014-15)</p><table><thead><tr><th>State</th><th>Production (Lakh Cubic Meter)</th></tr></thead><tbody><tr><td>Maharashtra</td><td>3578</td></tr><tr><td>Andhra Pradesh</td><td>2165</td></tr><tr><td>Karnataka</td><td>1985</td></tr><tr><td>Gujarat</td><td>1965</td></tr><tr><td>Uttar Pradesh</td><td>1693</td></tr><tr><td>West Bengal</td><td>1460</td></tr><tr><td>Assam</td><td>1403</td></tr><tr><td>Madhya Pradesh</td><td>1370</td></tr><tr><td>Tamil Nadu</td><td>1137</td></tr><tr><td>Odisha</td><td>1012</td></tr></tbody></table></div> <p>(i) Biogas is composed of mainly</p> <p>a- Methane, CO₂ nad O₂</p> <p>b- CO₂, H₂S, H</p> <p>c- Methane, CO₂</p> <p>d- CO₂, O₂, H₂S</p> <p>(ii) Which is the main component used by methane producing organisms</p> <p>a- Proteins</p> <p>b- Cellulose</p> <p>c- Hemicellulose</p> <p>d- All of these</p> <p>(iii) In India the main institution for the development of biogas production is-</p> <p>a- NBRI</p> <p>b- IVRI</p> <p>c- KVIC</p> <p>d- KYC</p> <p>(iv) Assertion: Methanobactrium is a common methanogen. Reason: These bacteria break down organic material and help in the digestion process of cattle.</p> <p>a- Both assertion and reason are correct and the reason is the correct explanation of assertion.</p> <p>b- Both assertion and reason are correct and reason is not a correct explanation of assertion.</p> <p>c- Assertion is true but the reason is false</p> <p>d- Assertion is false but the reason is true.</p>	State	Production (Lakh Cubic Meter)	Maharashtra	3578	Andhra Pradesh	2165	Karnataka	1985	Gujarat	1965	Uttar Pradesh	1693	West Bengal	1460	Assam	1403	Madhya Pradesh	1370	Tamil Nadu	1137	Odisha	1012	4
State	Production (Lakh Cubic Meter)																							
Maharashtra	3578																							
Andhra Pradesh	2165																							
Karnataka	1985																							
Gujarat	1965																							
Uttar Pradesh	1693																							
West Bengal	1460																							
Assam	1403																							
Madhya Pradesh	1370																							
Tamil Nadu	1137																							
Odisha	1012																							
9	<p>i- Write the source organism from where we can obtain statin and cyclosporin .</p> <p>ii- BOD is related with organic material present in aquatic body. Explain</p> <p>iii- What is activated sludge?</p> <p>iv- What is the reason behind large holes in swiss cheese?</p> <p>v- Write two beverages obtained without distillation.</p>	5																						